



Stellenbosch

UNIVERSITY
IYUNIVESITHI
UNIVERSITEIT

forward together
sonke siya phambili
saam vorentoe

Integrating Social, Economic and Environmental sustainability into the African Wild Meat Value Chain

Webinar presentation

Kumbirai Takawira (PhD candidate)

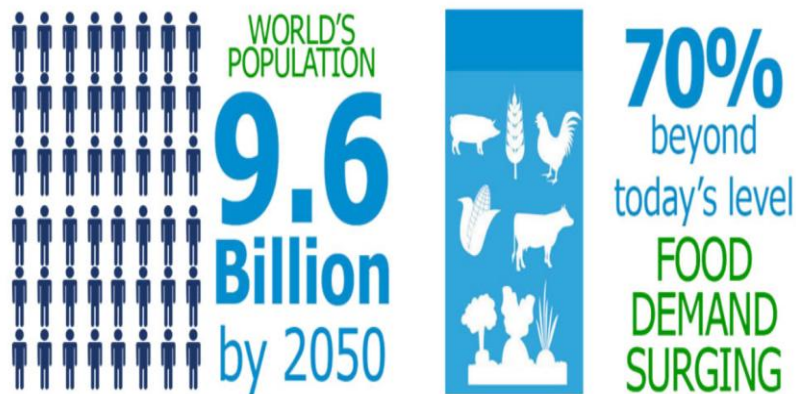
Supervisors: Dr. Wiseman, Prof. Francis & Dr. Melissa

Presentation outline

- **Background**
- **Problem statement**
- **Value chain structure**
- **Sustainability challenges**

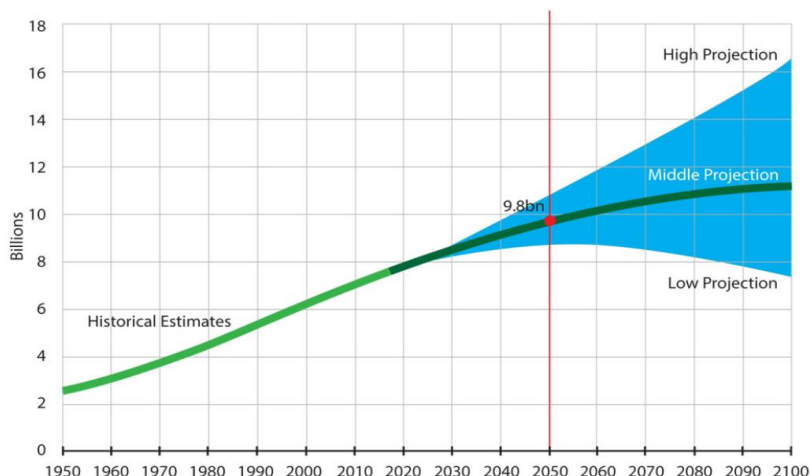


Background



* according to the UN Food and Agricultural Organization

Projected World Population



Data Source: United Nations, "World Population Prospects: 2015 Revision"

- Global protein demand rises with population growth and urbanization.
- Wild meat vital for diets and livelihoods.
- Unregulated industry poses sustainability challenges.
- Global consensus: Need for sustainable wild meat sector e.g. **CBD Decision 14/7** *“Voluntary guidance for a sustainable wild meat sector... with the aim of promoting the sustainability of supply at the source, managing the demand along the entire value chain, and creating the enabling conditions for legal, sustainable management of terrestrial wild meat in tropical and subtropical habitats, taking into account the traditional use by indigenous peoples and local communities to safeguard their livelihoods without adversely affecting them.”*
- Aligns with SDGs 15 (Life on Land), 12 (Responsible Consumption), and GBF targets (5 & 9).
- Also, regional and national strategies (e.g., SADC WBESF & NBES).

Problem statement



\$23B

The global illegal wildlife trade generates between \$7 billion and \$23 billion in illicit revenue annually.* The trade can involve a range of criminal activities, from trafficking and forgery to bribes and use of shell companies.¹

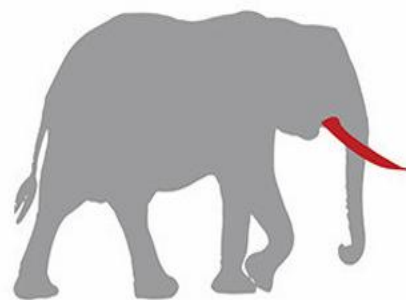
9,246%

In 2007, South Africa lost 13 rhinos. In 2014, it lost 1,215—an increase of more than 9,000%.²



\$60,000

Increasing demand for rhino horn in Asia has fueled black market prices. Rhino horn is said to go for \$60,000 per kg (\$132,000/lb).³

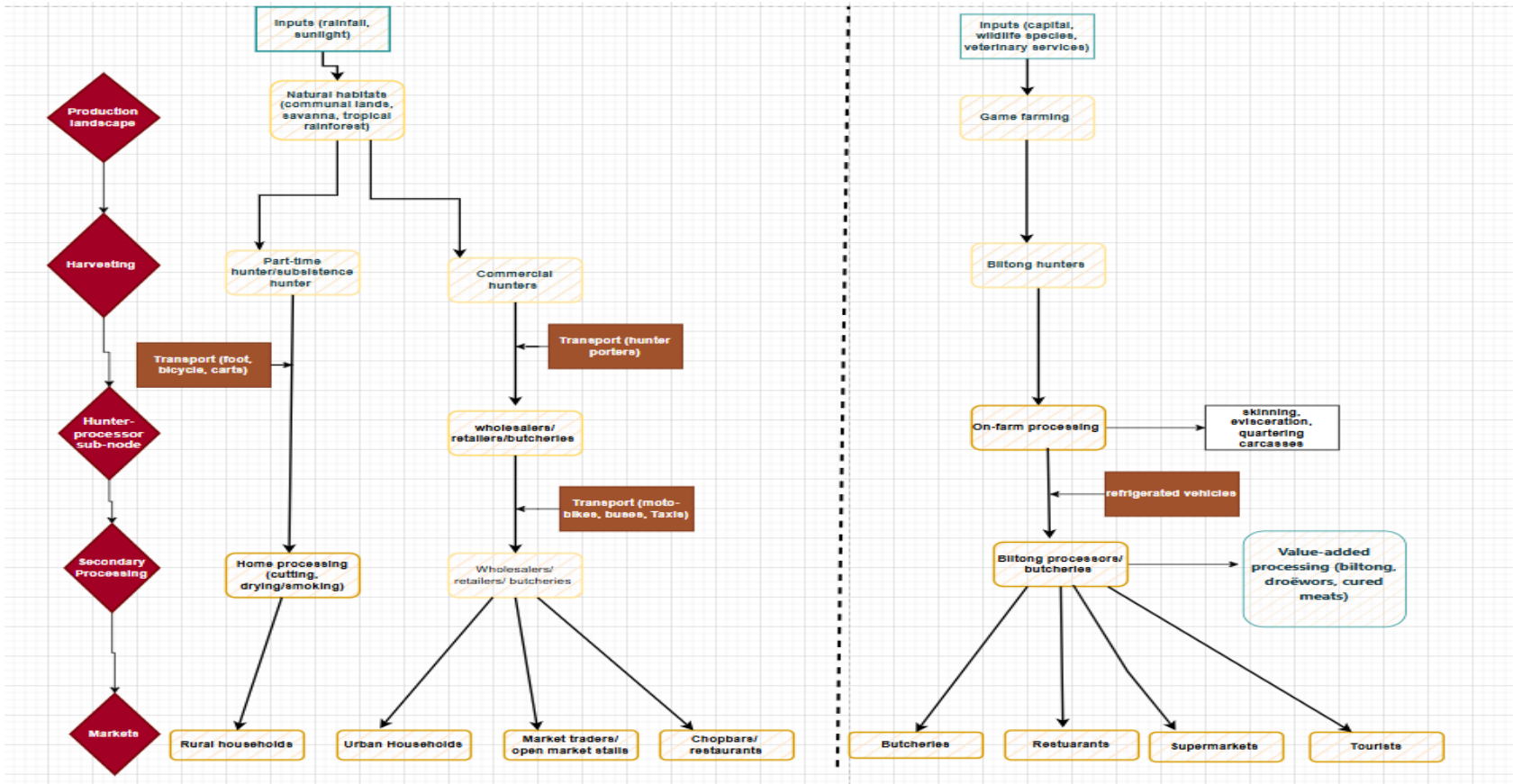


100,000

As many as 100,000 African elephants—33,000 per year—were killed between the years 2010 and 2012. More than 65% of Central Africa's forest elephant population has been wiped out in the last decade.⁵

- Wild meat sector is largely unregulated and informal
- Sustainability Crisis: illegal trade and unsustainable harvesting
- Tanzania's Serengeti: 40,000-200,000 animals illegally harvested annually (Mduma *et al.*, 1998).
- Congo Basin: Over 1 million tons of wild meat consumed yearly, mostly from unregulated sources (Fa *et al.*, 2002).
- Kindu, DRC: 40,000+ bushmeat carcasses traded annually, valued at USD 725,000 (Batumike *et al.*, 2021).
- Enugu, Nigeria: 283 bushbucks & 211 duikers recorded in rural wild meat shops (Andong *et al.*, 2023).
- Campo Ma'an, Cameroon: 1,392 kg of illegal meat seized from poachers (2020-Aug 2021) (Kubania, 2021).

The informal wild meat value chain structure



Value chain challenges

SEE sustainability challenges at the production stage

Value chain stage	Social	Economic	Environmental
Production landscape	Gender inequality	High-startup costs	Habitat encroachment
	Poor wages/salaries	Disease outbreaks	overharvesting
	Human-wildlife conflict	Uneven distribution of income	Loss of carbon sinks
	Lack of health and safety clothing	limited government protection of their enterprises	Disease outbreaks
			Climatic challenges (erratic rainfall)
			Land degradation
			Poor quality soil, and forage
Score	4	4	7

Value chain challenges

SEE sustainability challenges at the harvesting stage

Value stage	chain	Social	Economic	Environmental
Harvesting/extracti on		Poor working conditions (lack of protective clothing leading to injuries)	Low productivity due use of outdated equipment (locally made guns)	Over-extraction/unsustainable harvesting
		Poor/low wages	Uneven income distribution	Extirpation of large-bodied species and mega-fauna
		Gender inequality	Seasonal shortages	Selective hunting pressure
		Food insecurity	Lack of alternative sources of income	Disproportionate hunting pressure
				Loss of genetic diversity
				Localized hunting pressure
				Seasonal hunting pressure
				high takeoff rate
Score		4	4	8

Value chain challenges

SEE sustainability challenges at the processing stage

Value chain stage	Social	Economic	Environmental
Processing	Lack of protective clothes	Poor processing equipment	Lead and microbial contamination
	Poor hygienic conditions	Significant spoilage	Zoonotic disease outbreak
	Gender inequality	Unreliable and seasonal meat supply	
	Lack of refrigeration infrastructure and equipment	Limited value addition	
Score	4	4	2

Value chain challenges

SEE sustainability challenges at the markets stage

Value chain stage	Social	Economic	Environmental
Markets	Meat substitution	Lack of storage facilities	High demand induced overharvesting
	Gender inequality	Low profitability	Environmental pollution
	Zoonotic exposure	High enforcement and bribery costs	
	Eating of decomposed or contaminated meat	Risk of confiscation	
	Unsafe working conditions	High transaction costs	
		Poor transportation system	
		Long distance to the market	
Score	5	7	2



Stellenbosch

UNIVERSITY
IYUNIVESITHI
UNIVERSITEIT

forward together
sonke siya phambili
saam vorentoe

Maita basa

Realeboga

Ngiyabonga

Enkosi

Dankie